

# Current Transducer/Sensor



## SA2 DC Leakage Current Sensor

### FEATURES

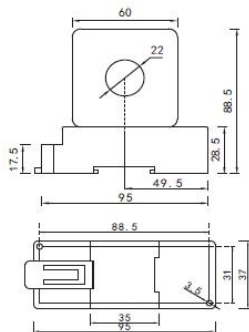
- \*Electromagnetic modulation principle, transforms the measured DC micro current into the RS485 output digital signal
- \*Automatic DIP switch, the address can be set freely(1~255)
- \*High anti-interference ability, suitable for long distance transmission
- \*Controlled by temperature compensation circuit, SCM technology, measure accurately
- \*Perforation input, standard din rail(35mm) mounting
- \*The measuring head can be rotated, is convenient to thread wire from different angle
- \*It widely applies to the branch way power supply of the isolation online detection in DC power supply system
- \* Power supply use universally in 11~30V

### MODEL

LF-MI11-A2 (A3) -1.0/

Model selection1: LF-MI11-R2A2-1.0/0~±10mA  
 Explanation: this product is a 0~±10mA input range, RS485 digital output, 12V power supply,  
 A2 style intelligent DC leakage current sensor.

### DIMENSION DIAGRAM



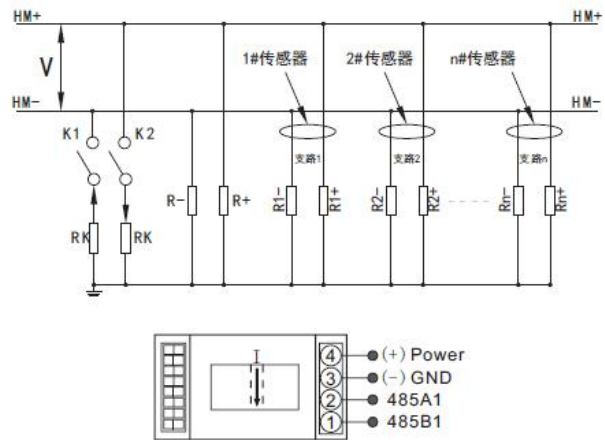
### ELECTRICAL DATA

- \*Input Range: 0~±100mA can choose 0~±10mA, 0~±20mA etc
- \*Accuracy Grade: ≤1.0%.F.S
- \*Linearity Degree: better than 0.2%
- \*Response Time:≤200mS
- \*Offset Current: ≤20uA
- \*Temperature Characteristics:≤150PPM/°C(0~50°C)
- \*Power Consumption:≤30 mA
- \*Isolation Withstanding Voltage:AC2.0KV/min\*1mA between input /output/ power
- \*Flame Retardancy:UL94-V0
- \*Working Environment:-10 °C ~50 °C , 20%~90% without condensation
- \*Storage Environment:-40 °C ~70 °C , 20%~95% without condensation

### MODEL REMARKS

- A---Output
- R: RS485 output  
(standard MODBUS communication protocol)
- B---Power supply
- 2: 12V±10%
- 3: 15V±10%
- 4: 24V±10%
- C---Current input range

### CONNECTION DIAGRAM



Xiamen ZT Technology Co., Limited

<http://www.transducersgroup.com>

[sales@zntar.com](mailto:sales@zntar.com)

Jason Zeng

Skype: zntarjason