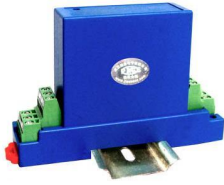


Current Transducer/Sensor



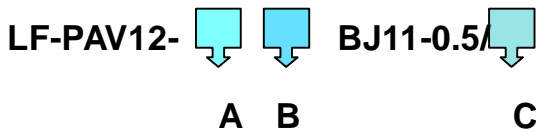
BJ11 Pulsating AC Voltage Isolation Transducer

Pulsating AC products refers to the input signal by the current or voltage signal of the rectification is not filter or the ripple content > 10%.

FEATURES

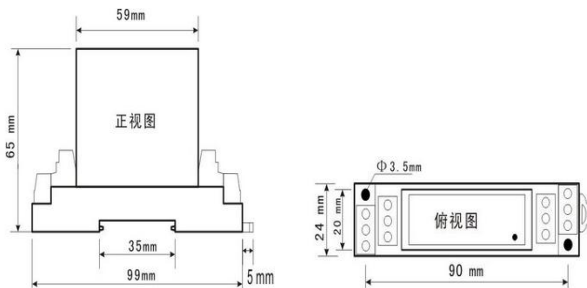
- ***Working principle:** Linear photoelectric isolating
- ***Advantage:** The best performance/price ratio, fast response, high accuracy, good stability, small volume, light weight, easy installation, and measure the AC voltage input
- ***Application:** Measure large AC signal ripple site
- ***Dimension (mm):** BJ11: 99(L) × 24(W) × 65(H)mm

MODEL



Model selection: LF- PAV12-32 BJ11-0.5/10mV
 Explanation: this product is a 10mV input range, 0-5V output, 12V power supply, BJ11- style Pulsating AC Current Transducer

DIMENSION DIAGRAM



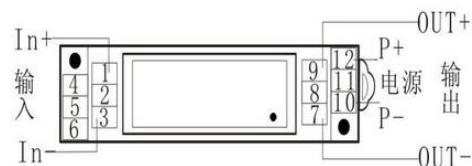
ELECTRICAL DATA

- *Input Range: 1mV~1000V can choose 10mV, 100mV etc
- *Accuracy Grade: ≤0.5%.F.S
- *Linearity Degree: better than 0.1%
- *Response Time: Photoelectric isolation < 15 us;
Modulation type < 150 ms.
- *Offset Voltage: ≤10mV
- *Frequency Range: 20~5 KHz
- *Temperature Characteristics: ≤100PPM/°C (0~50°C)
- *Power Consumption: ≤25 mA
- *Load: Voltage output: 5mA, Current output: 6V
- *Over Load: 2 times of input
- *Isolation Withstanding Voltage:
AC3.0KV/min*1mA between input /output/ power
- *Flame Redundancy: UL94-V0
- *Working Environment: -10°C~70,
20%~90% without condensation
- *Storage Environment: -40°C~85,
-20%~95% without condensation

MODEL REMARKS

A---Output	B---Power supply
1. 0~10V	1. 5V
3. 0~5V	2: 12V±10%
4. 0~20mA	4: 24V±15%
5. 4~20mA	
T: Special output	C---Current input range

CONNECTION DIAGRAM



Xiamen ZT Technology Co., Limited