

# Current Transducer/Sensor

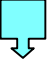
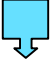



## BJ72 AC Current Transducer

### FEATURES

- \***Working principle:** New electromagnetic isolation
- \***Usage:** Used to measure AC current, especially for power frequency 50 Hz sine wave AC current
- \***Advantage:** The best performance/price ratio, power loss and small volume, light weight, easy installation, perforated input, without the insertion loss.
- \***Application:** Widely used for measuring AC current
- \***Dimension (mm):** BJ72: 175(L) × 42(W) × 148(H), aperture: 72mm

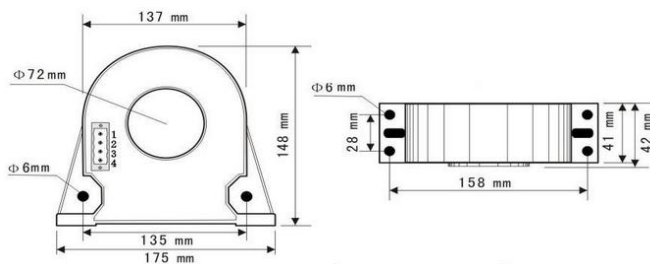
### MODEL

LF- AI12-   BJ72-0.5/   
A B C

Model selection1:LF- AI12-33 BJ72-1.0/10A

Explanation: this product is a 10A input range, 0-5V, 15V power supply, BJ72 style AC Current Transducer

### DIMENSION DIAGRAM



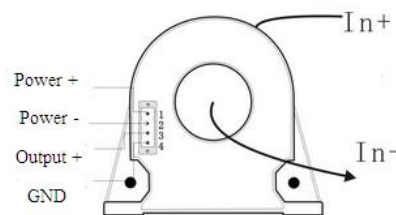
### ELECTRICAL DATA

- \*Input Range: 5A~2500A can choose 100A, 15A etc
- \*Accuracy Grade:  $\leq 0.5\%$  .F.S
- \*Linearity Degree: better than 0.1%
- \*Response Time:  $\leq 250\text{ms}$
- \*Offset Voltage:  $\leq 10\text{mV}$
- \*Frequency Range: 20~5 KHz
- \*Temperature Characteristics:  $\leq 100\text{PPM}/^\circ\text{C}$  (0~50 $^\circ\text{C}$ )
- \*Power Consumption:  $\leq 5\text{mA}$
- \*Load: Voltage output: 5mA, Current output: 6V
- \*Over Load: 30 times of input
- \*Isolation Withstanding Voltage:  
AC3.0KV/min\*1mA between input /output/ power
- \*Flame Retardancy: UL94-V0
- \*Working Environment: -10 $^\circ\text{C}$ ~70,  
20%~90% without condensation
- \*Storage Environment: -40 $^\circ\text{C}$ ~85,  
-20%~95% without condensation

### MODEL REMARKS

A---Output	B---Power supply
2: 0~4V	
3: 0~5V	2:12V $\pm 10\%$
4: 0~20mA	3:15V $\pm 10\%$
5: 4~20mA	4:24V $\pm 15\%$
T: Special output	C---Current input range
Two Wires,	

### CONNECTION DIAGRAM



Xiamen ZT Technology Co., Limited