

Current Transducer/Sensor






SB1 DC Leakage Current transducer

FEATURES

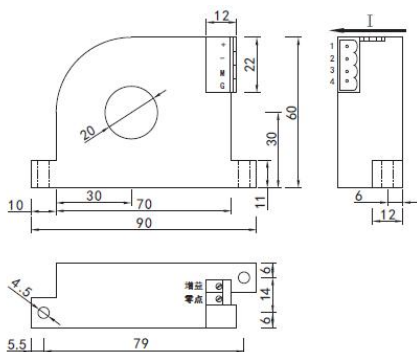
- *Electromagnetic modulation principle, transforms the measured DC micro current into the standard DC voltage output according to the linear proportion
- *Controlled by temperature compensation circuit, small thermal drift measure accurately
- *Perforation, plug terminal insert, screw fastening plane mounting
- *It widely applies to the branch way power supply of the isolation online detection in DC power supply system
- *Dimension(mm): 90(L)×26(W)×60(H) aperture:20mm

MODEL

LF-MI11-  B1 (B2) -1.0/

Model selection1: LF-MI11-35B1-1.0/0~±10mA
 Explanation: this product is a 0~±10mA input range,
 0~±5V output, ±12V power supply,
 B1 style DC leakage current sensor.

DIMENSION DIAGRAM



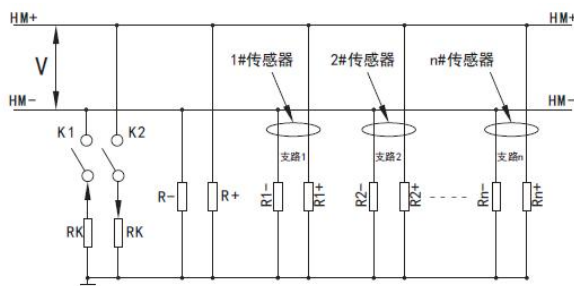
ELECTRICAL DATA

- *Input Range:0~±100mA can choose 0~±10mA, 0~±20mA etc
- *Accuracy Grade: ≤1.0%.F.S
- *Linearity Degree: better than 0.2%
- *Response Time:≤200ms
- *Offset Voltage:≤20mV
- *Temperature Characteristics:≤150PPM/°C(0~50°C)
- *Power Consumption:≤30 mA
- *Isolation Withstanding Voltage: AC2.0KV/min*1mA between input /output/ power
- *Load Capacity: 2 times current continuous, 30 times current 1 second
- *Flame Retardancy:UL94-V0
- *Working Environment:-10 °C ~50 °C , 20%~90% without condensation
- *Storage Environment:-40 °C ~70 °C , 20%~95% without condensation

MODEL REMARKS

A---Output	B---Power supply
3: 0~±5V	5: ±12V±10%
	6: ±15V±10%
T: Special output	C---Current input range

CONNECTION DIAGRAM



1脚"+":正工作电源正接线端 2脚"-":负工作电源正接线端
 3脚"M+":测量输出端 4脚"G":电源及输出公共接地端
 注:单电源工作时, 2脚为空



Xiamen ZT Technology Co., Limited

<http://www.transducersgroup.com>

sales@zntar.com

Jason Zeng

Skype: zntarjason